



POST-ASH Issue 4, 2014

Obinutuzumab with Fludarabine/ Cyclophosphamide or Bendamustine as First-Line Therapy for CLL

For more visit ResearchToPractice.com/5MJCASH2014

Research
To Practice®

CME INFORMATION

OVERVIEW OF ACTIVITY

Each year, thousands of clinicians, basic scientists and other industry professionals sojourn to major international oncology conferences, like the American Society of Hematology (ASH) annual meeting, to hone their skills, network with colleagues and learn about recent advances altering state-of-the-art management in hematologic oncology. As such, these events have become global stages where exciting science, cutting-edge concepts and practice-changing data emerge on a truly grand scale. This massive outpouring of information has enormous benefits for the hematologic oncology community, but the truth is it also creates a major challenge for practicing oncologists and hematologists.

Although original data are consistently being presented and published, the flood of information unveiled during a major academic conference is unprecedented and leaves in its wake an enormous volume of new knowledge that practicing oncologists must try to sift through, evaluate and consider applying. Unfortunately and quite commonly, time constraints and an inability to access these data sets leave many oncologists struggling to ensure that they're aware of crucial practice-altering findings. This creates an almost insurmountable obstacle for clinicians in community practice because they are not only confronted almost overnight with thousands of new presentations and data sets to consider but they are also severely restricted in their ability to review and interrogate the raw findings.

To bridge the gap between research and patient care, this CME activity will deliver a serial review of the most important emerging data sets on the management of chronic lymphocytic leukemia (CLL) from the latest ASH meeting, including expert perspectives on how these new evidence-based concepts may be applied to routine clinical care. This activity will assist medical oncologists, hematologists, hematology-oncology fellows and other healthcare professionals in the formulation of optimal clinical management strategies and the timely application of new research findings to best-practice patient care.

LEARNING OBJECTIVES

- Apply recent clinical research findings with the newly FDA-approved combination of obinutuzumab and chlorambucil to the management and care of patients with previously untreated CLL.
- Develop an understanding of emerging efficacy and side-effect data with novel agents and combination regimens — including next-generation anti-CD20 antibodies and PI3 kinase, Btk and BCL-2 inhibitors — under evaluation for previously untreated and relapsed/refractory CLL and, where appropriate, facilitate patient access to ongoing trials of these agents.
- Evaluate recent clinical findings with the newly FDA-approved Btk inhibitor ibrutinib, alone and in combination with chemotherapy, for patients with CLL with and without deletion 17p or those with relapsed/refractory disease.
- Compare and contrast the benefits and risks of chemoimmunotherapy with FCR versus bendamustine/rituximab (BR) as first-line therapy for fit patients with CLL.

ACCREDITATION STATEMENT

Research To Practice is accredited by the Accreditation Council for Continuing Medical Education to provide continuing medical education for physicians.

CREDIT DESIGNATION STATEMENT

Research To Practice designates this enduring material for a maximum of 2 *AMA PRA Category 1 Credits™*. Physicians should claim only the credit commensurate with the extent of their participation in the activity.

HOW TO USE THIS CME ACTIVITY

This CME activity contains slides and edited commentary. To receive credit, the participant should review the slide presentations, read the commentary, complete the Post-test with a score of 75% or better and fill out the Educational Assessment and Credit Form located at ResearchToPractice.com/5MJCASH2014/4/CME.

CONTENT VALIDATION AND DISCLOSURES

Research To Practice (RTP) is committed to providing its participants with high-quality, unbiased and state-of-the-art education. We assess potential conflicts of interest with faculty, planners and managers of CME activities. Real or apparent conflicts of interest are identified and resolved through a conflict of interest resolution process. In addition, all activity content is reviewed by both a member of the RTP scientific staff and an external, independent physician reviewer for fair balance, scientific objectivity of studies referenced and patient care recommendations.

FACULTY — The following faculty (and their spouses/partners) reported real or apparent conflicts of interest, which have been resolved through a conflict of interest resolution process:

Brad S Kahl, MD
Skoronski Chair of Lymphoma Research
Associate Professor
University of Wisconsin School of Medicine and Public Health
Associate Director for Clinical Research
UW Carbone Cancer Center
Madison, Wisconsin

Advisory Committee: Celgene Corporation, Genentech BioOncology, Millennium: The Takeda Oncology Company, Roche Laboratories Inc; Contracted Research: Genentech BioOncology, Roche Laboratories Inc.

EDITOR — Dr Love is president and CEO of Research To Practice, which receives funds in the form of educational grants to develop CME activities from the following commercial interests: AbbVie Inc, Algeta US, Amgen Inc, Astellas, AstraZeneca Pharmaceuticals LP, Aveo Pharmaceuticals, Bayer HealthCare Pharmaceuticals, Bodesix Inc, Biogen Idec, Boehringer Ingelheim Pharmaceuticals Inc, Bristol-Myers Squibb Company, Celgene Corporation, Daiichi Sankyo Inc, Dendreon Corporation, Eisai Inc, Exelixis Inc, Genentech BioOncology, Genomic Health Inc, Gilead Sciences Inc, Incyte Corporation, Lilly, Medivation Inc, Merck, Millennium: The Takeda Oncology Company, Novartis Pharmaceuticals Corporation, Novocure, Onyx Pharmaceuticals Inc, Prometheus Laboratories Inc, Regeneron Pharmaceuticals, Sanofi, Seattle Genetics, Spectrum Pharmaceuticals Inc, Teva Oncology and VisionGate Inc.

RESEARCH TO PRACTICE STAFF AND EXTERNAL REVIEWERS —
The scientific staff and reviewers for Research To Practice have no real or apparent conflicts of interest to disclose.

This educational activity contains discussion of published and/or investigational uses of agents that are not indicated by the Food and Drug Administration. Research To Practice does not recommend the use of any agent outside of the labeled indications. Please refer to the official prescribing information for each product for discussion of approved indications, contraindications and warnings. The opinions expressed are those of the presenters and are not to be construed as those of the publisher or grantors.

This activity is supported by educational grants from Boehringer Ingelheim Pharmaceuticals Inc, Celgene Corporation, Genentech

BioOncology/Biogen Idec, Millennium: The Takeda Oncology Company, Onyx Pharmaceuticals Inc, Seattle Genetics and Spectrum Pharmaceuticals Inc.

Hardware/Software Requirements:

A high-speed Internet connection

A monitor set to 1280 x 1024 pixels or more

Internet Explorer 7 or later, Firefox 3.0 or later, Chrome, Safari

3.0 or later

Adobe Flash Player 10.2 plug-in or later

Adobe Acrobat Reader

(Optional) Sound card and speakers for audio

Last review date: March 2014

Expiration date: March 2015

To go directly to slides and commentary for this issue, [click here](#).

Throughout a recent interview with investigator Dr Brad Kahl about the breathtaking developments in the treatment of chronic lymphocytic leukemia (CLL), my mind kept flashing back 24 hours to a similar recording session for our *Visiting Professors* audio series focused on the care of patients with a variety of advanced gastrointestinal cancers. One of the themes that regularly emerged during that discussion was the sense of desperation and hopelessness felt by patients and clinicians regarding the modest research advances that have recently taken place in that field. Coming from that concerning landscape, my conversation with Dr Kahl about CLL was a different story and hopefully the model for the future of oncology for patients, families and healthcare professionals.



Brad S Kahl, MD

Indeed, one might argue that in the short (50+ years) history of contemporary oncology the recent clinical research progress in CLL is unprecedented, as the confluence of a variety of research efforts has culminated in an abundance of new treatment options. To provide some insight into how emerging data will inform the integration of these exciting treatments into practice, here are Dr Kahl's perspectives on some of the most important CLL papers presented at the annual ASH meeting in New Orleans.

Chimeric antigen receptor (CAR) T-cell immunotherapy

A coming issue of this series will dive deeper into this extraordinary treatment that will eventually be studied in all B-cell cancers, but at ASH most of the data presented on this CAR-based T-cell therapy targeting CD19 were in CLL and acute lymphoblastic leukemia. The bottom line is that frequent, rapid and profound antitumor responses and a delayed cytokine release syndrome that requires a great deal of attention were observed. Stay tuned for full details.

Obinutuzumab

One of two recently approved agents in CLL (with more likely on the way), this type II anti-CD20 antibody was big news in the Big Easy as the plenary presentation of [the CLL11 trial](#) illustrated superior efficacy of obinutuzumab versus rituximab (R) in older patients and those with comorbidities receiving chlorambucil. Dr Kahl notes that clinicians must be aware of the potential for increased toxicity with this drug — particularly manageable infusion reactions mainly with the first treatment — but he believes the clear-cut benefit of obinutuzumab makes it difficult to use R in patients receiving chlorambucil.

Of course, an important related question is how this agent fits in with other chemotherapeutic regimens, and at ASH we saw data from [an ongoing Phase Ib trial](#) evaluating either fludarabine/cyclophosphamide (FC) or bendamustine (B) combined with obinutuzumab. The efficacy findings in this nonrandomized effort seemed similar to those historically observed with R, but this early report also described frequent infusion reactions and some myelosuppression. Dr Kahl believes that until further data become available, these combinations should not be used outside a trial setting.

FCR versus BR

Seems like eons ago when all we had to talk about was this important clinical question that was the subject of the [German CLL10 trial](#) in fit patients presented at ASH. Results from this much-awaited study demonstrated pretty much what most people expected and were already acting on in their practices — slightly greater efficacy in terms of complete response (CR) rates and progression-free survival (PFS) with FCR but considerably more toxicity, particularly in older patients. These data reinforce Dr Kahl's current nonprotocol approach to up-front treatment of CLL as follows:

- For younger patients, consider but do not insist on FCR, or, alternatively, administer BR.
- For older but not particularly frail patients (about age 60 to 75), usually opt for BR.
- For the difficult-to-define "very elderly," use chlorambucil/obinutuzumab.

Others will argue that few patients are too frail to receive bendamustine, but now that a new generation of novel agents has arrived, these issues are all being completely reconsidered anyhow.

Ibrutinib in relapsed/refractory (RR) CLL

Just approved in CLL, this Bruton tyrosine kinase inhibitor was the centerpiece of several Phase I-II ASH papers, all of which also continue to demonstrate high levels of activity, including in patients with del(17p) disease.

– Ibrutinib alone

A report from the NCI of the first 53 patients enrolled on [a Phase II trial](#) demonstrated that two thirds of these individuals responded. Most of the remaining patients responded in nodes and other sites but with increasing rather than decreasing white blood cell counts. This lymphocytosis is observed with a variety of the new small B-cell receptor inhibitors and may be part of a demargination syndrome with cells being discharged into circulation from the protected microenvironment of the marrow, spleen and the lymph nodes. With time the white counts eventually decrease — often normalizing — and this has led to a special response classification of “partial response with lymphocytosis” that occurred in 28% of 47 evaluable patients for an overall response rate of 94%. Dr Kahl views these cases as essentially CRs because the circulating cells eventually die, and it’s not clear if abrogating this phenomenon with another antineoplastic agent like R or chemotherapy adds to long-term treatment benefit.

– Ibrutinib with R

Thirty-eight of 40 (95%) patients on [this Phase II trial](#) experienced objective responses, and Dr Kahl views this higher rate compared to ibrutinib monotherapy as mainly the result of counteracting the initial lymphocytosis and notes it remains to be seen if this will affect long-term outcome and survival. An ongoing randomized Phase II trial in RR CLL evaluating ibrutinib alone or with R will hopefully provide part of the answer to this important question.

– Ibrutinib with BR

Although 93% of 30 patients responded in [this Phase Ib trial](#), as per Dr Kahl it’s not clear that bendamustine is adding anything to ibrutinib or as previously stated that R provides long-term benefit. Dr Kahl, like most or all investigators, is currently using ibrutinib in relapsed CLL as per the indication, but it will be interesting to see how this evolves as more data accumulate on earlier use, particularly in cases with adverse cytogenetic factors and for the elderly.

Idelalisib

Another major story at ASH was a “late breaker” and *New England Journal* publication (along with the CLL11 obinutuzumab trial) detailing the results from [a Phase III trial](#) evaluating R with or without this PI3 kinase-delta inhibitor in 220 patients with relapsed disease who were not candidates for chemotherapy (median age 71). An overwhelming advantage was seen in the combination arm — 81% versus 13% overall response rate and marked improvement in PFS (HR = 0.15) and overall survival (HR = 0.28), both statistically significant. However, Dr Kahl wonders if the comparison to R, a notoriously ineffective monotherapy in CLL, will be enough to elicit FDA approval.

ABT-199

This fascinating small molecule inhibits BCL-2, which is frequently overexpressed in lymphoid cancers and a cause of dysregulation of apoptosis. While ABT-199 may still be in need of a name, it is quickly gaining a great deal of attention, and according to Dr Kahl the most significant problem may be that it “works too well,” with an overall response rate of 84% among 56 evaluable patients and similar response rates irrespective of del(17p) status. Specifically, the rapid and profound antitumor activity associated with the agent frequently results in tumor lysis syndrome. As such, [an ongoing Phase I study](#) presented at ASH attempted to define the optimal dosing strategy to prevent this worrisome side effect. Regardless, Dr Kahl believes that ABT-199 will eventually prove to be as efficacious in CLL as ibrutinib — the agent he currently feels is the most effective available for the disease.

From the perspective of the general oncologist, the deluge of new agents and therapies in CLL is likely to result in frequently changing clinical algorithms during the next few years as trials evaluate various sequences, combinations and predictive factors. It seems inevitable that the outcomes of patients will improve significantly, and the best-case scenario is cure or a functional cure with normal life expectancy as with chronic myelogenous leukemia. It remains to be seen whether this type of exciting clinical paradigm will enter mainstream oncology in the future and include the many patients with GI cancers and other solid tumors who currently face much more limited options.

Next on this ASH review series, Dr Rafael Fonseca talks about new therapies in multiple myeloma, with more on the recently approved agents carfilzomib and pomalidomide, and a wave of promising other molecules, including several monoclonal antibodies attempting to become the “rituximab of myeloma.”

Neil Love, MD

[Research To Practice](#)

Miami, Florida

Research To Practice is accredited by the Accreditation Council for Continuing Medical Education to provide continuing medical education for physicians.

Research To Practice designates this enduring material for a maximum of 2 *AMA PRA Category 1 Credits™*. Physicians should claim only the credit commensurate with the extent of their participation in the activity.

This activity is supported by educational grants from Boehringer Ingelheim Pharmaceuticals Inc, Celgene Corporation, Genentech BioOncology/Biogen Idec, Millennium: The Takeda Oncology Company, Onyx Pharmaceuticals Inc, Seattle Genetics and Spectrum Pharmaceuticals Inc.

Obinutuzumab with Fludarabine/Cyclophosphamide or Bendamustine as First-Line Therapy for CLL

Presentation discussed in this issue

Brown JR et al. **Safety and efficacy of obinutuzumab (GA101) with fludarabine/cyclophosphamide (G-FC) or bendamustine (G-B) in the initial therapy of patients with chronic lymphocytic leukemia (CLL): Results from the Phase 1b Galton trial (GAO4779g).** *Proc ASH 2013*; **Abstract 523.**

Slides from a presentation at ASH 2013 and transcribed comments from a recent interview with Brad S Kahl, MD (2/13/14)

Safety and Efficacy of Obinutuzumab (GA101) with Fludarabine/Cyclophosphamide (G-FC) or Bendamustine (G-B) in the Initial Therapy of Patients with Chronic Lymphocytic Leukemia (CLL): Results from the Phase 1b GALTON Trial (GAO4779g)

Brown JR et al.

Proc ASH 2013; Abstract 523.

Research
To Practice®

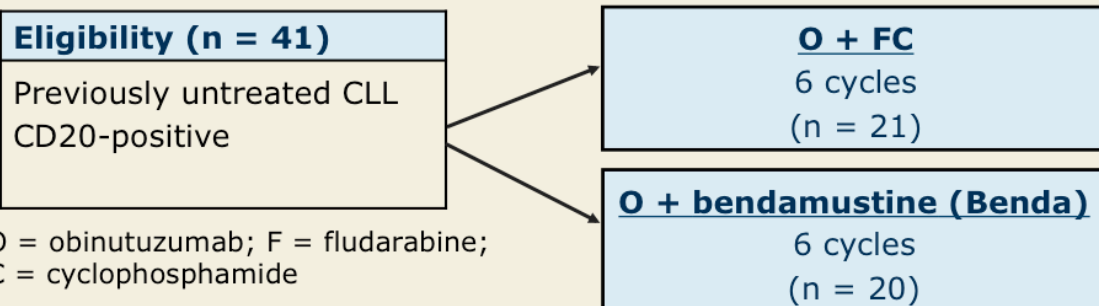
Background

- Chemoimmunotherapy is the standard treatment for fit patients with CLL.
- Early studies in relapsed/refractory CLL demonstrated single-agent activity of obinutuzumab, but treatment was associated with neutropenia.
- Results from the Phase III CLL11 trial of obinutuzumab/chlorambucil (Clb) or rituximab/Clb or Clb alone for patients with untreated CLL with comorbidities demonstrated (*NEJM* 2014;[Epub ahead of print]):
 - Improved PFS and ORR with obinutuzumab/Clb compared to rituximab/Clb or Clb alone
- **Study objective:** To demonstrate the safety and preliminary efficacy of obinutuzumab in combination with common standard regimens for patients with CLL.

Brown JR et al. *Proc ASH* 2013;Abstract 523.

Research
To Practice®

Phase Ib GALTON Trial Design

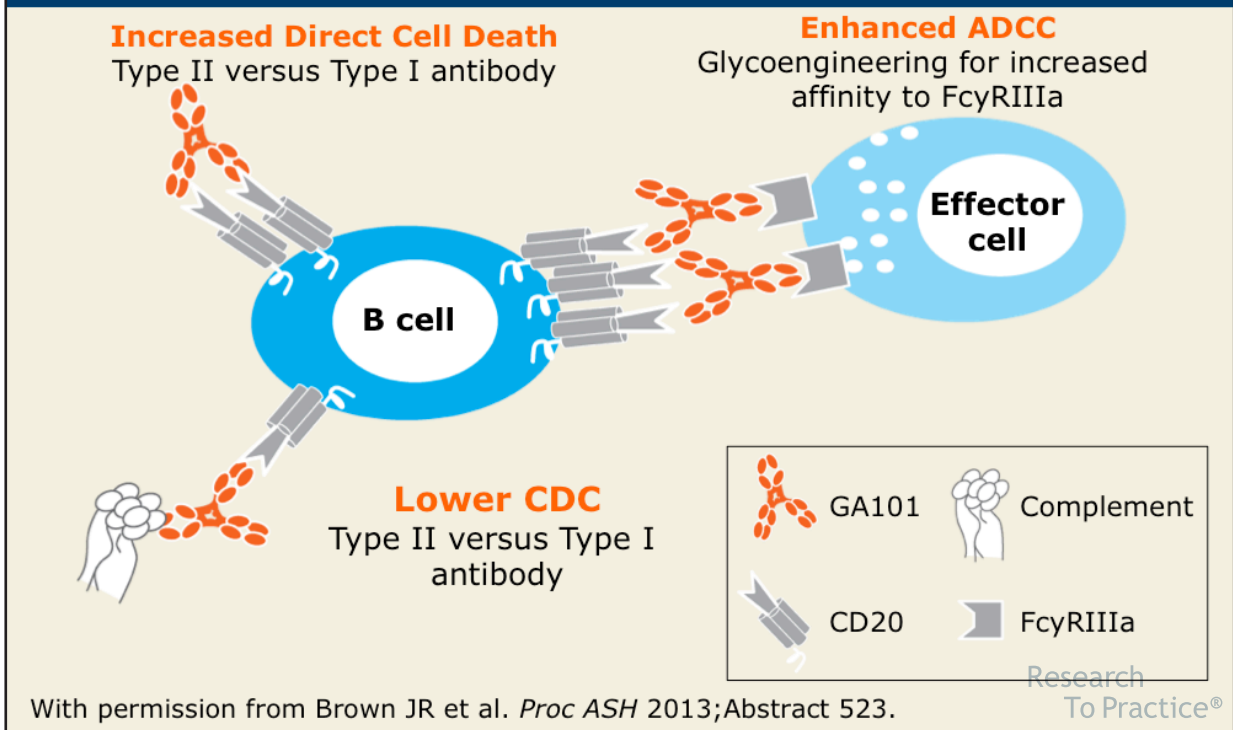


- O: IV, d1 (100 mg), d2 (900 mg), d8, 15 (1,000 mg) for cycle 1 and d1 (1,000 mg) for cycles 2-6
- F: IV, 25 mg/m² on d2, 3, 4 for cycle 1 and d1, 2, 3 for cycles 2-6
- C: IV, 250 mg/m² on d2, 3, 4 for cycle 1 and d1, 2, 3 for cycles 2-6
- Benda: IV, 90 mg/m² on d2, 3 for cycle 1 and d1, 2 for cycles 2-6
- **Primary endpoint: Safety and tolerability of O + FC or O + Benda**

Brown JR et al. *Proc ASH* 2013;Abstract 523.

Research
To Practice®

Mechanism of Action of Obinutuzumab



Response Rates at the End of Treatment (EOT)

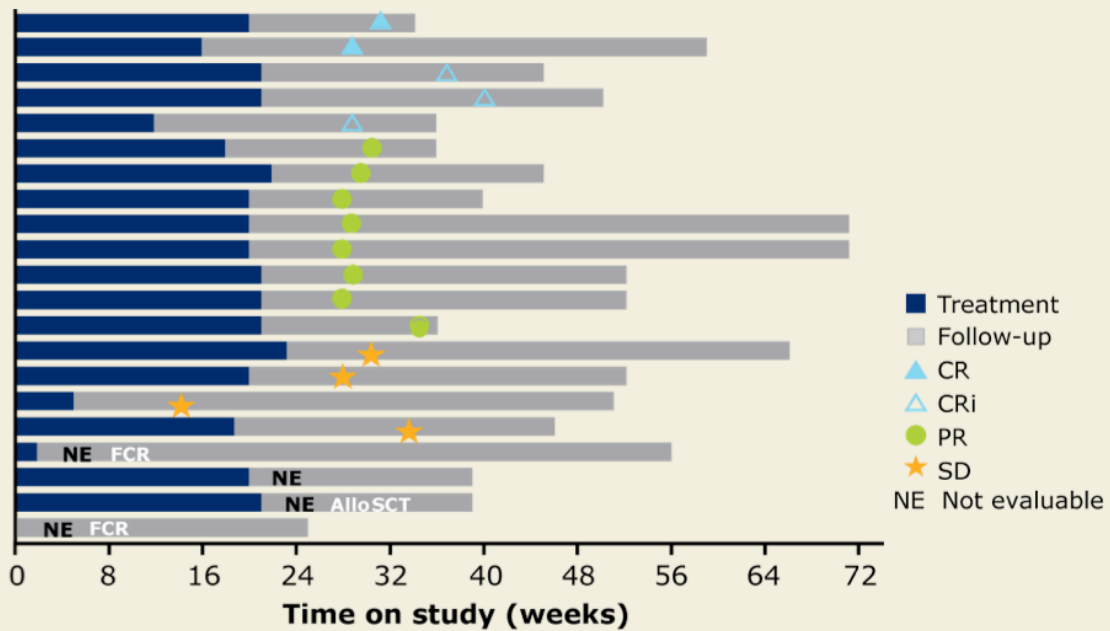
Response rate	O + FC (n = 21)	O + Benda (n = 20)
ORR	62%	90%
Complete response (CR)	10%	20%
CRi	14%	25%
Partial response	38%	45%
Stable disease	19%	0%
Progressive disease (PD)	0%	0%
Not evaluable	5%	5%

CRi = CR with incomplete blood count recovery

Brown JR et al. *Proc ASH* 2013;Abstract 523.

Research To Practice®

Duration of Treatment and Follow-Up: O + FC

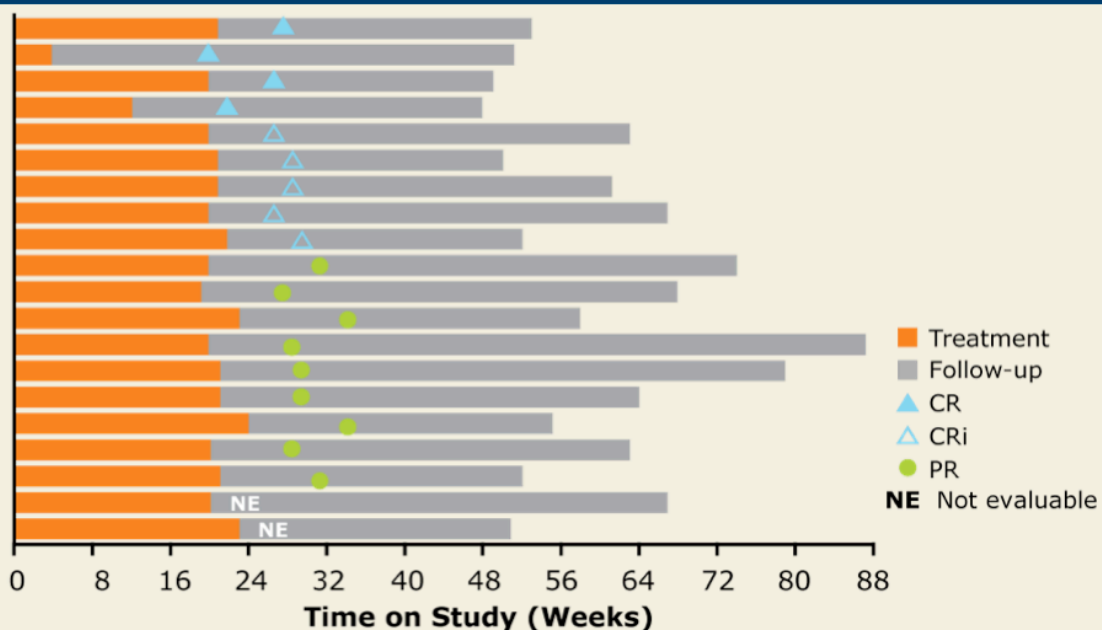


- No patient experienced PD during the median observation time of 10.7 mo

With permission from Brown JR et al. *Proc ASH 2013*;Abstract 523.

Research
To Practice®

Duration of Treatment and Follow-Up: O + Benda



- No patient experienced PD during the median observation time of 13.6 mo

With permission from Brown JR et al. *Proc ASH 2013*;Abstract 523.

Research
To Practice®

Select Adverse Events (AEs)

Grade 3/4 AE	O + FC (n = 21)	O + Benda (n = 20)
Any	86%	85%
Neutropenia	29%	50%
Febrile neutropenia	19%	10%
Thrombocytopenia	5%	10%
Anemia	14%	5%
Infections	19%	5%
Increased ALT/AST	19%/10%	5%/5%
Tumor lysis syndrome (TLS)	0%	5%

Brown JR et al. *Proc ASH* 2013;Abstract 523.

Research
To Practice®

Serious AEs

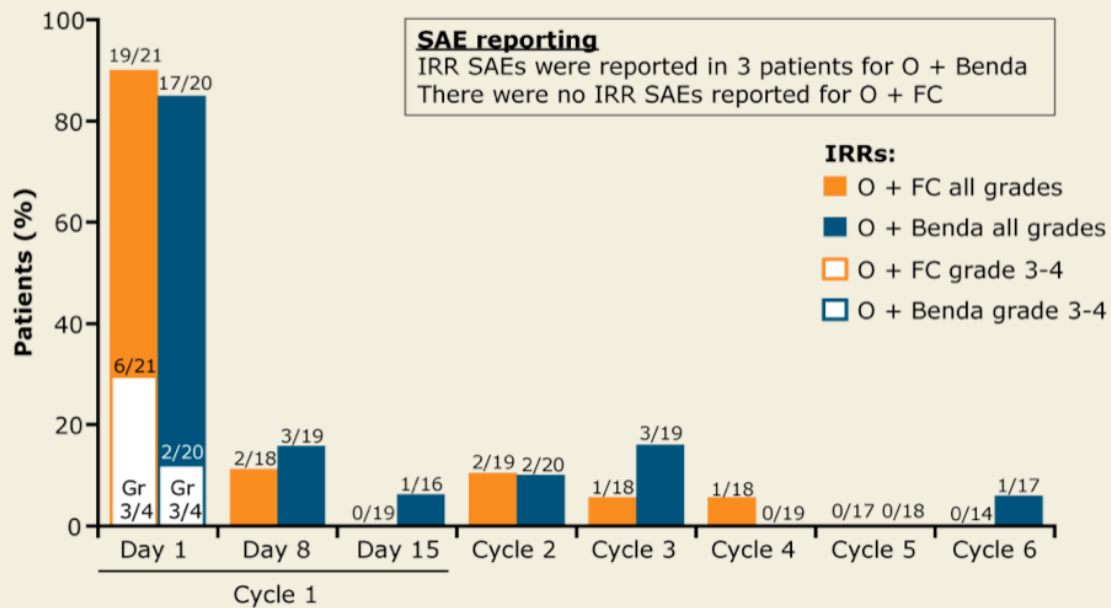
	O + FC (n = 21)	O + Benda (n = 20)
Any	29%	40%
Febrile neutropenia	14%	10%
Infections	15%	5%
Pyrexia	0%	10%
Nausea	5%	5%
Vomiting	5%	5%

- Serious AEs experienced by 1 patient
 - O + FC: diarrhea, neutrophil decrease
 - O + Benda: fatigue, tachycardia, TLS, syncope, mental status change, swelling face, hypertension
- AEs leading to treatment discontinuation: O + FC (n = 7); O + Benda (n = 2)

Brown JR et al. *Proc ASH* 2013;Abstract 523.

Research
To Practice®

Infusion-Related Reactions (IRR) to Obinutuzumab by Cycle



- IRR: Any AE related to O that occurred ≤ 24 h after the end of infusion

With permission from Brown JR et al. *Proc ASH 2013*;Abstract 523.

Research
To Practice®

Pharmacokinetics, B-Cell Depletion and Minimal Residual Disease (MRD)

- Pharmacokinetic analysis (O + FC: n = 20; O + Benda: n = 18)
 - Serum concentration range with O was similar to that previously established and similar for O + FC and O + Benda
- Patients with depleted B cells:
 - EOT response: 37/41 patients
 - 6-mo follow-up after final dose: 28/28 patients
- Patients with negative bone marrow biopsies:
 - O + FC: 13/14 patients
 - O + Benda: 14/14 patients
- Patients with negative MRD in peripheral blood:
 - Multicenter at EOT — O + FC: 6/9 patients; O + Benda: 15/16 patients
 - At Dana-Farber Cancer Institute, 2-14 mo after therapy: 9/9 patients who received O + FC and underwent testing

Brown JR et al. *Proc ASH 2013*;Abstract 523.

Research
To Practice®

Author Conclusions

- An acceptable safety profile was observed for obinutuzumab in combination with standard chemotherapy (FC or Benda).
- Obinutuzumab-related IRR was a common adverse event experienced by most patients.
 - IRRs typically occurred during administration of the first dose of obinutuzumab and were manageable.
 - No Grade 3/4 IRRs occurred after the first dose; no fatal IRRs occurred.
- The most common Grade ≥ 3 AE was neutropenia.
- Clinical activity was observed in both the obinutuzumab/FC and obinutuzumab/Benda cohorts.
- No patient has had disease progression and no deaths have occurred.

Brown JR et al. *Proc ASH* 2013;Abstract 523.

Research
To Practice®

GALTON Trial: Safety and Efficacy of Obinutuzumab with FC or Benda for Previously Untreated CLL

This is a small, ongoing Phase Ib study evaluating the safety and feasibility of combining obinutuzumab with Benda or FC. In terms of safety, more infusion-related reactions (IRRs) occur with obinutuzumab — 90% of the patients had experienced IRRs. Of the 21 patients on the FC arm, 7 had to discontinue treatment early because of AEs. The most common AE on the Benda arm was profound myelosuppression, and 2 patients had to stop treatment early.

From the results, it's unclear whether the efficacy of either combination is any better than that of FC/rituximab or Benda/rituximab. However, the safety signal with obinutuzumab is striking. Personally, I would not start treating my patients with obinutuzumab and Benda or FC yet. We need more data.

Interview with Brad S Kahl, MD, February 13, 2014

Research
To Practice®