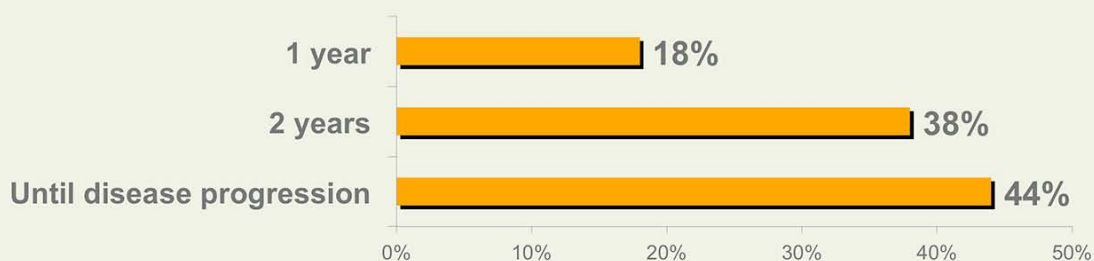


## Duration of post-transplant maintenance for patients at standard risk

What duration of maintenance therapy do you generally recommend for younger, otherwise healthy patients with standard-risk MM who respond to induction therapy and ASCT?



### EDITOR'S COMMENTS

Another critical post-transplant maintenance issue is the duration of therapy, and both faculty treat indefinitely or until disease progression, the same strategy used in the CALGB-100104 trial that demonstrated a survival benefit with lenalidomide maintenance. Our survey indicates that only about half of oncologists use indefinite maintenance, with the others stopping therapy after 1 to 2 years. Several Phase III trials are evaluating limited-duration versus indefinite treatment, including ECOG-E1A11. Dr Munshi notes that studies of defined duration usually demonstrate an increase in relapses from the time treatment is discontinued.

### SELECT REFERENCES WITH LINKS

Benboubker L et al. **Lenalidomide and dexamethasone in transplant-ineligible patients with myeloma.** *N Engl J Med* 2014;371(10):906-17. [Abstract](#)

McCarthy P et al. **Lenalidomide after stem-cell transplantation for multiple myeloma.** *N Engl J Med* 2012;366(19):1770-81. [Abstract](#)

Palumbo A et al. **Continuous lenalidomide treatment for newly diagnosed multiple myeloma.** *N Engl J Med* 2012;366(19):1759-69. [Abstract](#)